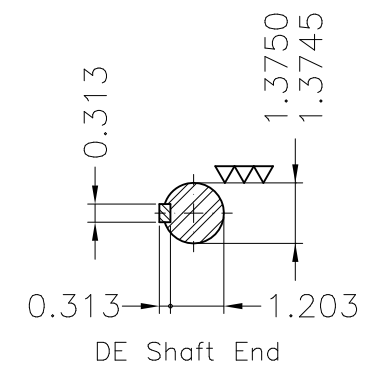
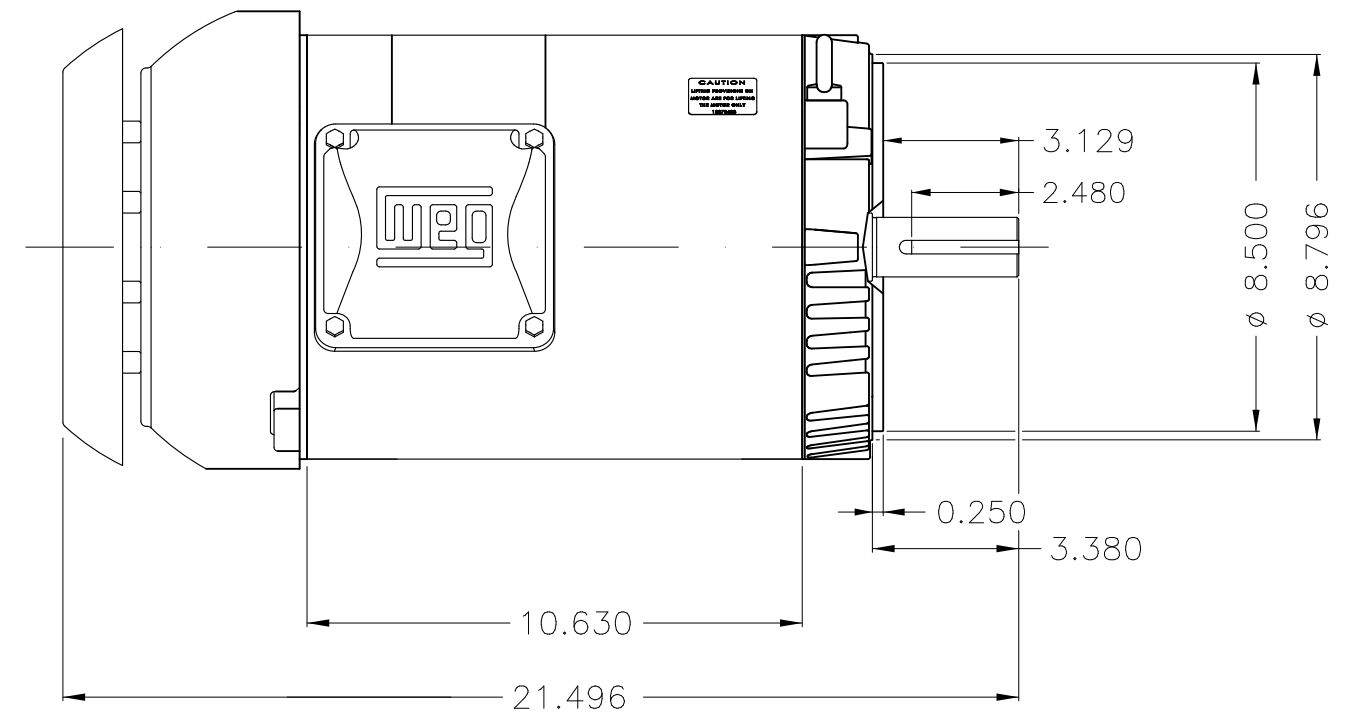
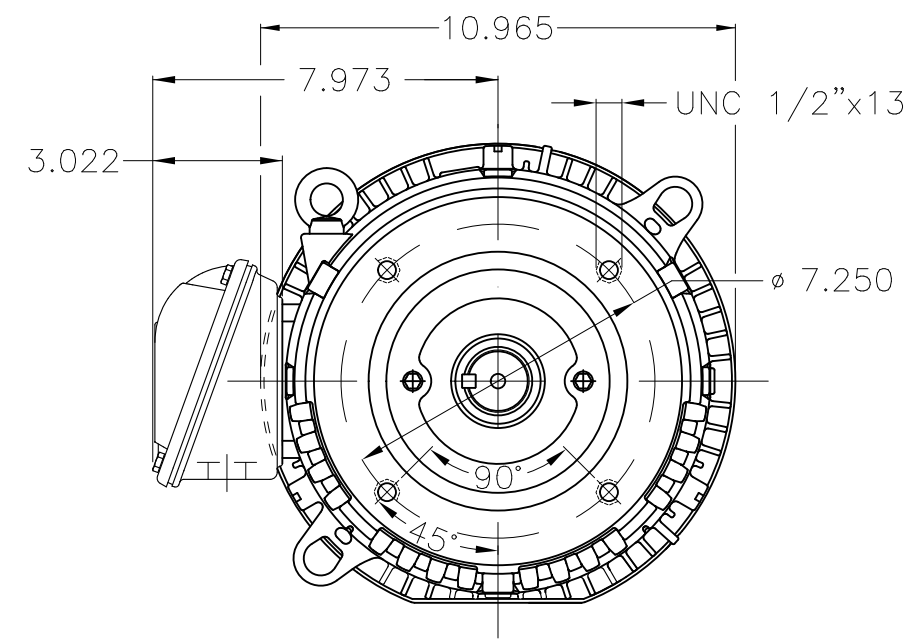
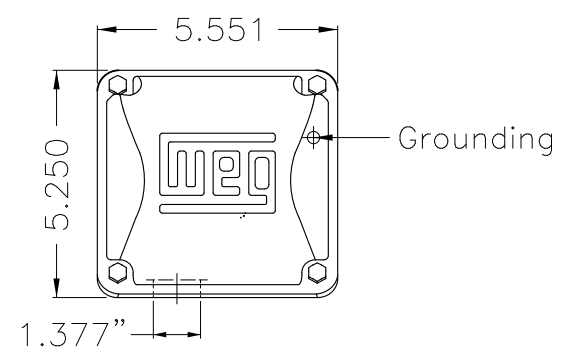


Dimensões em polegada
Dimensions in inches

THIS IS AN UPDATED REVISION, THE
PREVIOUS ONE MUST BE DISREGARDED.



Color Munsell N 1 matte black
Painting plan 207N
Mounting W-6/V18R(D)

ECM	LOC	SUMMARY OF MODIFICATIONS	EXECUTED	CHECKED	RELEASED	DATE	VER
EXECUTED	USERADMIN	THREE P. MOTOR CLOS ROLLED STEEL NEMA PREM					
CHECKED		FRAME 213/5TC IP55 TEFC					
RELEASED		WEG code: 12677339					
REL DT	21.08.2020	WMO Jaragua do Sul	Product Engineering	SHEET	1 / 1		

10 HP 04 Poles 60Hz

A





NEMA
Premium



3PT9
C US LISTED
FOR SAFE AREA



Energy Verified

MADE IN MEXICO

MAT: 12677339 CC029A

For 60Hz: Class I, Zone 2, IIC

W01.TE0IC0X0N

Class I, Div.2, Gr. A,B,C,D - T3

MODEL 01018ET3ER215TC-S

Div 2 Inverter Duty (SF1.00)

26AGO2020 S/N:

CT 2:1/MT 1000:1

PH 3 FR 213/5TC HP(KW) 10(7.5) Hz 60

V 230/460 RPM 1760

A 24.4/12.2 DUTY CONT.

SFA 28.1/14.0 INS CL F AT 80K AMB 40°C CODE H DES B IP55

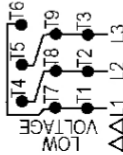
SF 1.15 ENCL TEFC

PF 0.84 NEMA NOM.EFF. 91.7%

ALT 1000 m.a.s.l. USABLE @ 208V 27.0A SF1.00

ALTERNATE RATING: 7.5HP 50Hz 190-220/380-415V SF1.15

22.4-20.6/11.2-10.9A 1465RPM EFF 90.1% (IE3) IEC 60034-1



- T1-BLU T2-WHT
- T3-ORG T4-YEL
- T5-BLK T6-GRY
- T7-PNK T8-RED
- T9-BRK RED

INTERCHANGE ANY TWO LINE WIRES TO REVERSE THE ROTATION

For safe area-inverter duty motor For 60Hz use on VPWM 1000:1 VT, 4:1 CT

DE: 6208-ZZ ODE: 6206-ZZ MOBIL POLYREX EM

WARNING: Motor must be grounded in accordance with local and national electrical codes to prevent serious electrical shocks. Disconnect power source before servicing unit.

AVERTISSEMENT: Le moteur doit être mis à la terre conformément aux codes électriques locaux et nationaux afin d'éviter tout choc électrique grave. Déconnectez l'alimentation avant l'entretien de la machine.

